



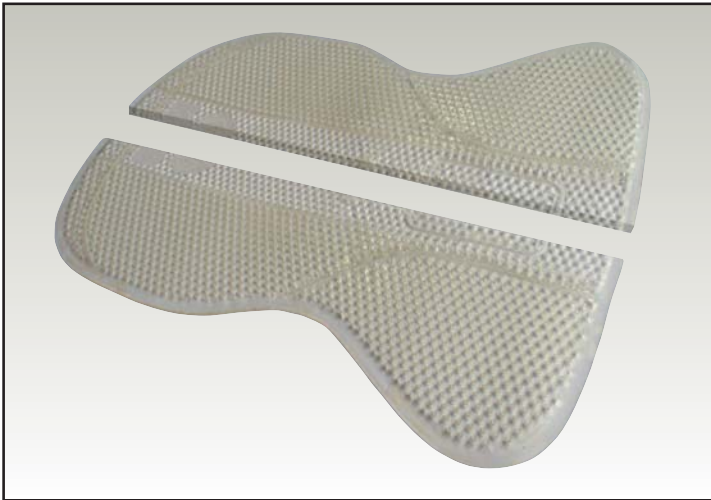
**BR Jos Lansink Champion close contact jumping saddle**  
 This close contact saddle has a middle deep, small seat, the saddle sits comfortable and provides good contact between rider and horse. The saddle has a synthetic saddle tree with bowed design safety hooks. The pre-shaped panels provide a perfect stable position and optimum contact with the horse. The saddle is made of printed Sedgwick saddle leather and the seat, kneepads, knee- and calfrolls are made of calfleather finished with contrast stitching.

**102012** - medium fit - 17" - 17.5" - black  
**102012** - medium fit - 17.5" - tobacco  
**102013** - wide fit - 17"-17.5" - black  
**102013** - wide fit - 17.5" - tobacco



**BR Jos Lansink Champion II close contact jumping saddle** This close contact saddle has a middle deep, small seat, the saddle sits comfortable and provides good contact between rider and horse. The saddle has a synthetic saddle tree with bowed design safety hooks. The pre-shaped panels provide a perfect stable position and optimum contact with the horse. The saddle is made of printed soft calfleather finished with contrast stitching.

**102014** - medium fit - 17" - 17.5" - black  
**102014** - medium fit - 17.5" - tobacco  
**102015** - wide fit - 17"-17.5" - black    **102015** - wide fit - 17.5" - tobacco



**Freemax Soft Gel pad**  
 The Therapeutic Soft Gel is a non-toxic, anti-allergic, amortizing product also used in the hospital. This gel is in all the directions traction ably, irrepresible like the water, elastic and washable. It doesn't absorb the organic fluids, the smells and it doesn't support the bacterial growth. The Soft Gel contains in his chemical-physics structure a mineral oil of very high purity. Non-skid pad in two parts so it can be put in the Freemax numnah easily. **153913** - transparent



**Premiere weymouth bridle**  
 Nice bridle for a favourable price. The bridle has a wide noseband (ca. 3,5 cm) with easy tightening system, the noseband and browband are raised and lined. The bridle has s.s. buckles and leather reins, a snaffle rein of 16 mm with non-skid inside and a crub rein of 13 mm.

**183102** - F/S - black, black-white



**Velcro fastening**  
 Synthetic fastening with Velcro to fasten bandages or leg protectors. Per piece.

**299906** - black



**BR bandag pads**  
 Cotton pads with 320 grams filling, 50x70 cm. Per pair.

**304908** - blue, black



**Dog sheet Jack Lami**

Sheet made of 70D nylon with a warm fleece lining.

**396478** - 29-35-45 cm - blue



**Sergio Grasso jodhpur boots Venezia**

Jodhpur boots of grain calfskin upper and lining. The jodhpur has a front fastening, a round toe and a rear zip.

**562644** - zwart - 36 t/m 44



**Trimmer Lister Star 33811**

The Lister Star is unique because of its compact, handy size and slight weight. The Lister Star, 203V 45 Watt engine, has the same clipper blades as large machines and also the performance is the same. The trimmer has an air-cooled engine, weights only 760 grams and has a rubber cable of 5 mtr. The machine is packed in a luxury box and will be delivered including a clipper blade (art. 802920, A2F/AC fine, 1,4 mm), oil, brush and extra air-filter.

**801922**

**801998**-Temporary Action - A Wahl REX 1230 clipper for free when you buy art. 801922



**BR lead rope**

Strong lead rope with matt silver fittings, 2.10 mtr. (can be combined with the BR grooming halter art.no. 432020)

**442022** - blue, brown, burnt brick



**Effax polish**

Suitable to give new shine to synthetic materials like PVC, rubber, PU etc. It is also suitable for cleaning. It will make your tendon boots, over reach boots, riding boots and other articles as new!

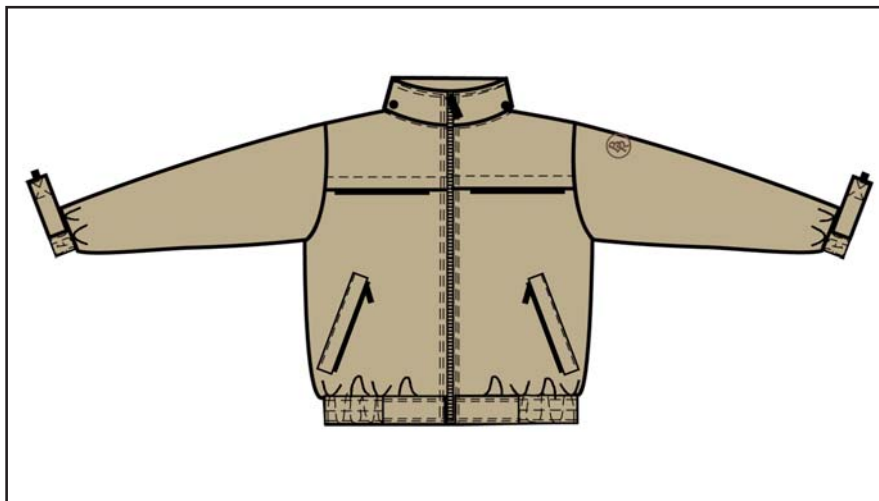
**769781** - 100 ml



**BR club jacket**

Sporty jacket in 100% polyester with a warm fleece lining. The jacket is 3000 mm waterproof, windproof and 3000 gr./m<sup>2</sup> 24 hrs breathable. This unisex jacket is very suitable for clubs and teams, the jacket can be printed or embroidered and is available in many sizes. The ventilation opening on the backyoke can be used to make the embroidery or print also on the left chest there is an opening to print of embroidery a logo or name. Further more the jacket has two zipper slitpockets, an innerpocket and a detachable hood that also can be put away in the collar.

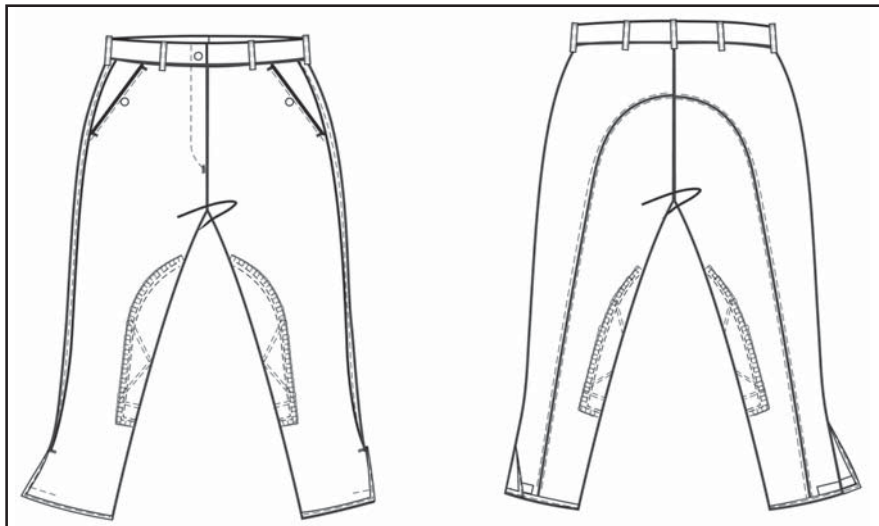
**651000** - 128 up to 164 - XXS up to XXL - natural, bleu, grey



**BR club jacket**

Sporty jacket in 100% polyester with a mesh lining. The jacket is 3000 mm waterproof, windproof and 3000 gr./m<sup>2</sup> 24 hrs breathable. This unisex jacket is very suitable for clubs and teams, the jacket can be printed or embroidered and is available in many sizes. The ventilation opening on the backyoke can be used to make the embroidery or print also on the left chest there is an opening to print of embroider a logo or name. Further more the jacket has two zipper slitpockets, an inner-pocket and a detachable hood that also can be put away in the collar.

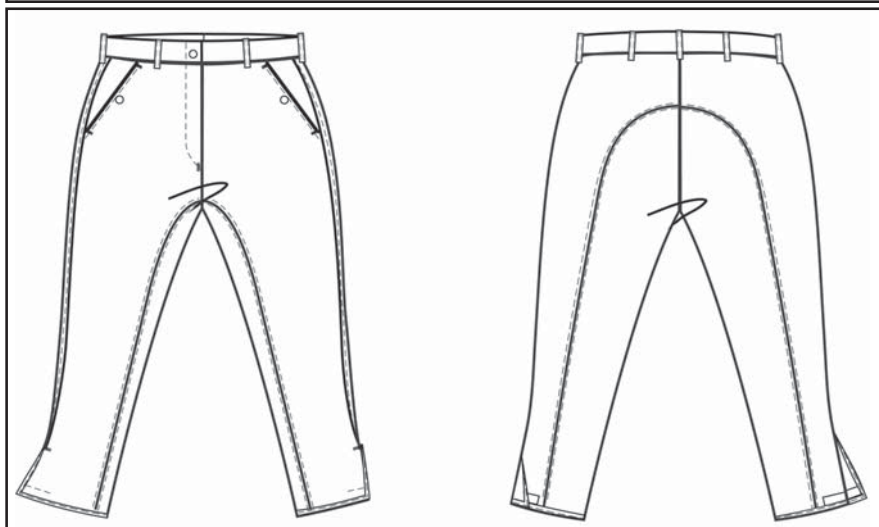
**652000** - 128 up to 164 - XXS up to XXL - natural, bleu, grey



**BR Ascot ladies riding-breeches**

Close fit riding-breeches of the Schoeller Prestige material. This fabric is extra light due to the usage of micro fibre thread and is specially designed for the equestrian sport. The material offers freedom of movement, is breathable and moisture regulating. The breeches have knee patches from woven material and slitpockets. The BR Ascot is available in two linear measures.

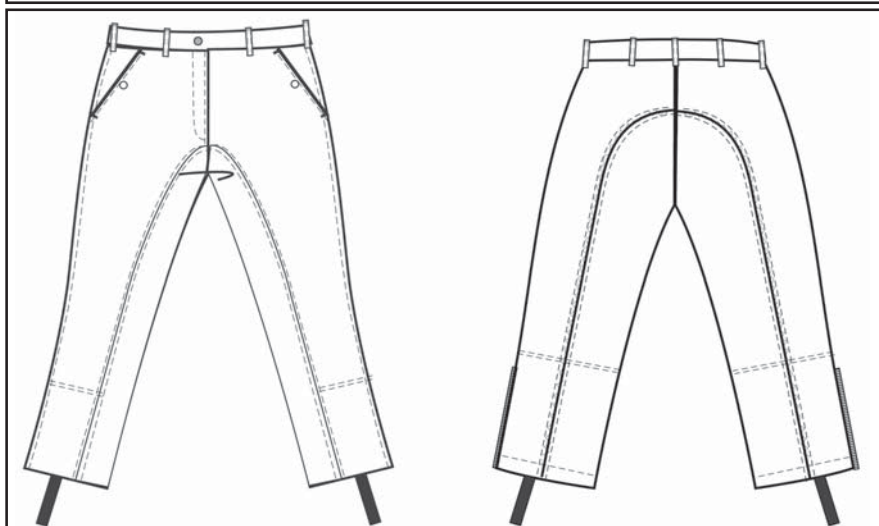
**621010** - blue, white, liver brown, anthracite - 36 up to 46 and 72 up to 88



**BR Epsom ladies riding-breeches**

Close fit riding-breeches of the Schoeller Prestige material. This fabric is extra light due to the usage of micro fibre thread and is specially designed for the equestrian sport. The material offers freedom of movement, is breathable and moisture regulating. The breeches have a Clarino full seat of 3/4 length and slitpockets. The BR Epsom is available in two linear measures.

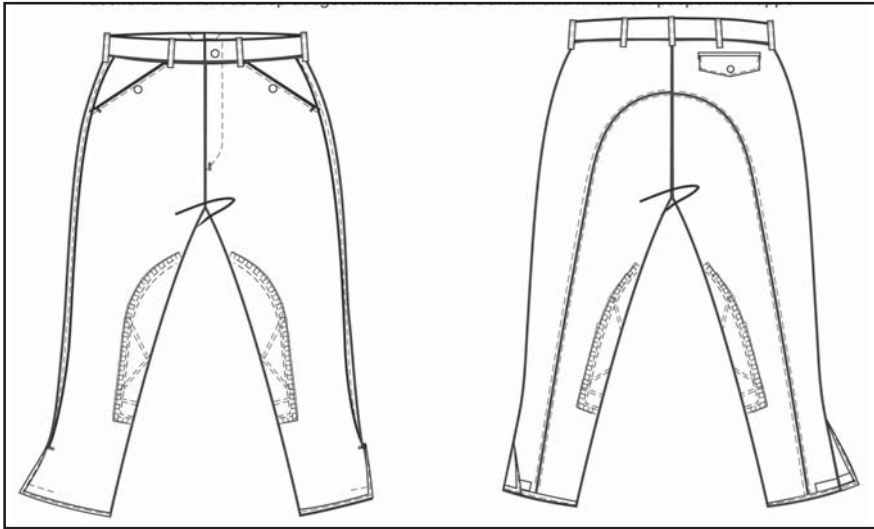
**621011** - blue, white, liver brown, anthracite - 36 up to 46 and 72 up to 88



**BR Windsor ladies jodhpur**

Beautiful jodhpur of the Schoeller Prestige material. This fabric is extra light due to the usage of micro fibre thread and is specially designed for the equestrian sport. The material offers freedom of movement, is breathable and moisture regulating. The jodhpur has a Clarino full seat and slitpockets.

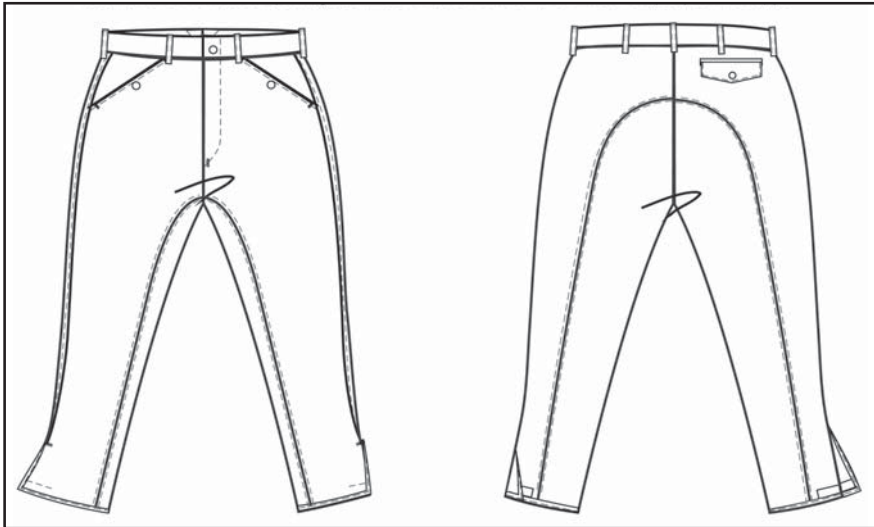
**621020** - liver brown - 36 up to 46



**BR Paddock gents riding-breeches**

Close fit riding-breeches of the Schoeller Prestige material. This fabric is extra light due to the usage of micro fibre thread and is specially designed for the equestrian sport. The material offers freedom of movement, is breathable and moisture regulating. The breeches have knee patches from woven material and slitpockets. The BR Paddock is available in two linear measures.

**625003** - white, liver brown, anthracite - 36 t/m 46 and 72 t/m 88



**BR Parcours gents riding-breeches**

Close fit riding-breeches of the Schoeller Prestige material. This fabric is extra light due to the usage of micro fibre thread and is specially designed for the equestrian sport. The material offers freedom of movement, is breathable and moisture regulating. The breeches have a Clarino full seat of 3/4 length and slitpockets. The BR Parcours is available in two linear measures.

**625004** - white, liver brown, anthracite - 36 t/m 46 and 72 t/m 88